

LUXURY PROPERTIES

FINESTRAT - BENIDORM - COSTA BLANCA

*The data given in this brochure are approximate and for information only.



LOCATION MAP

CAMPANA GARDEN - it's a luxury residential complex, located in Finestrat adjacent to Benidorm, surrounded by green areas, golf courses, magnificent sports facilities, close to the best beaches of Costa Blanca. Campana Garden is formed by nine residential complexes. Contemporary design and architecture are combined in this luxury residential complex, which right down to the last detail respond to the strictest quality standards. Not only in the building materials but also in the finishes.











CAMPANA BAY RESIDENTIAL

VILLA GREEN

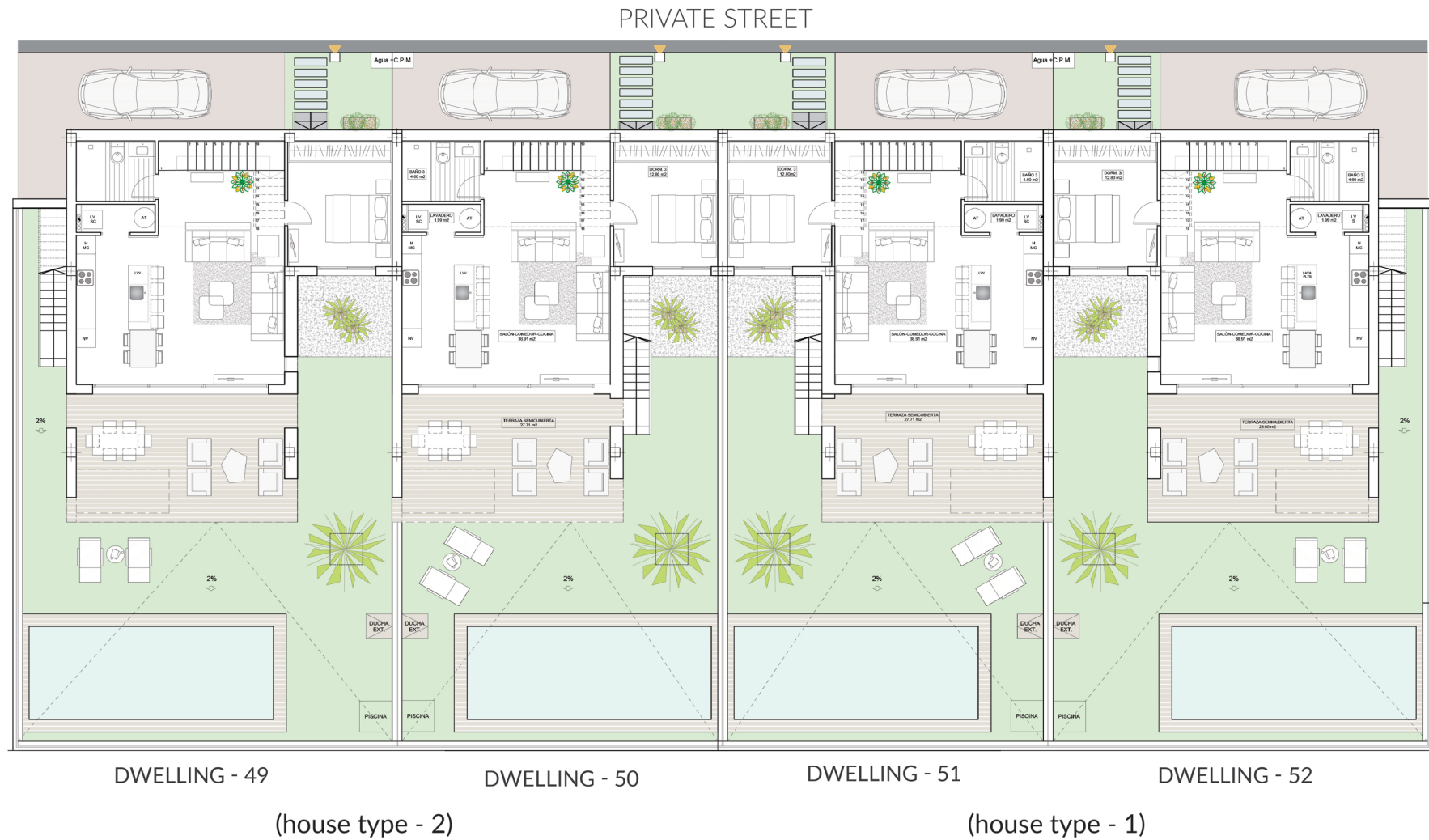
16 Contemporary villas with beautiful views, located in Campana Bay Residential at Campana Garden Complex.

Two floor properties: Bright ground Floor with large windows in living-dinning room with open access to the pool and garden area; one bedroom and one bathroom. First floor with two bedrooms, en suite bathrooms, and open access to the terrace.

-  **3 BEDROOM**
-  **3 BATHROOM**
-  **PRIVATE PARKING**
-  **185.72 M2**
-  **PLOT 221/258 M2**
-  **OPTIONAL POOL**



VILLAS GREEN - GENERAL PLAN



TOTAL BUILT: 186.77 M2

OPTIONAL POOL: 22.50 M2

PLOT: 221 M2(central dwellings)
258 M2(lateral dwellings)

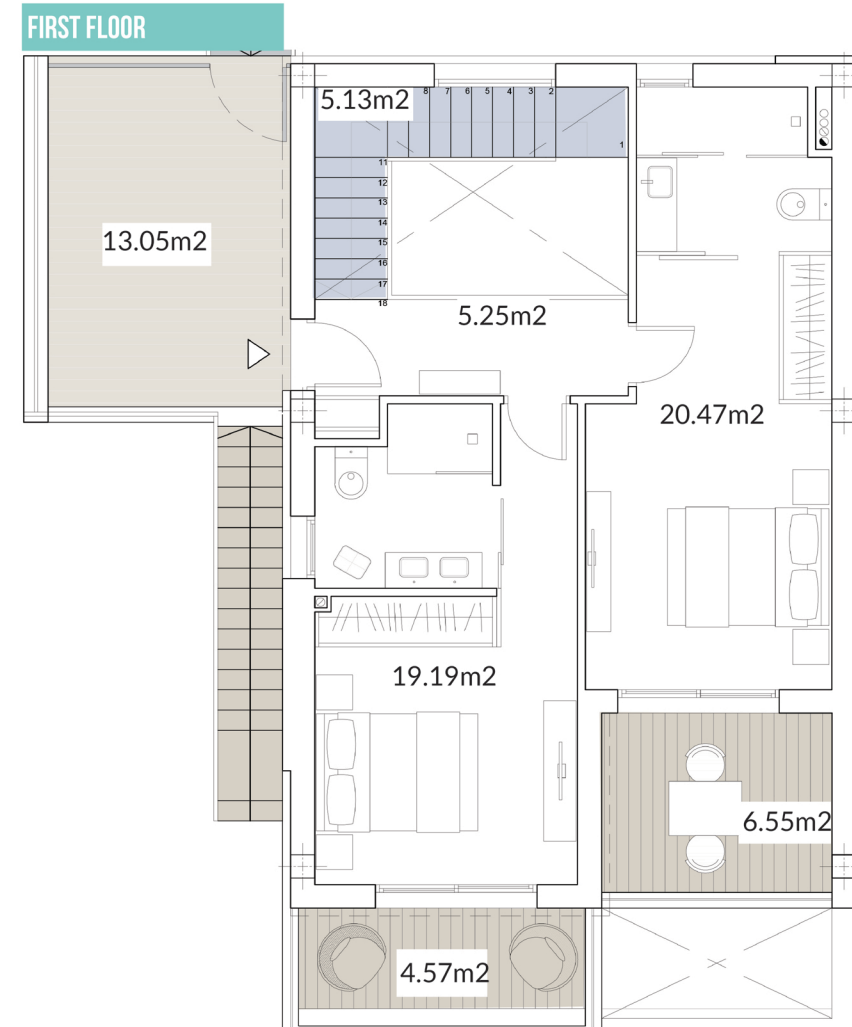
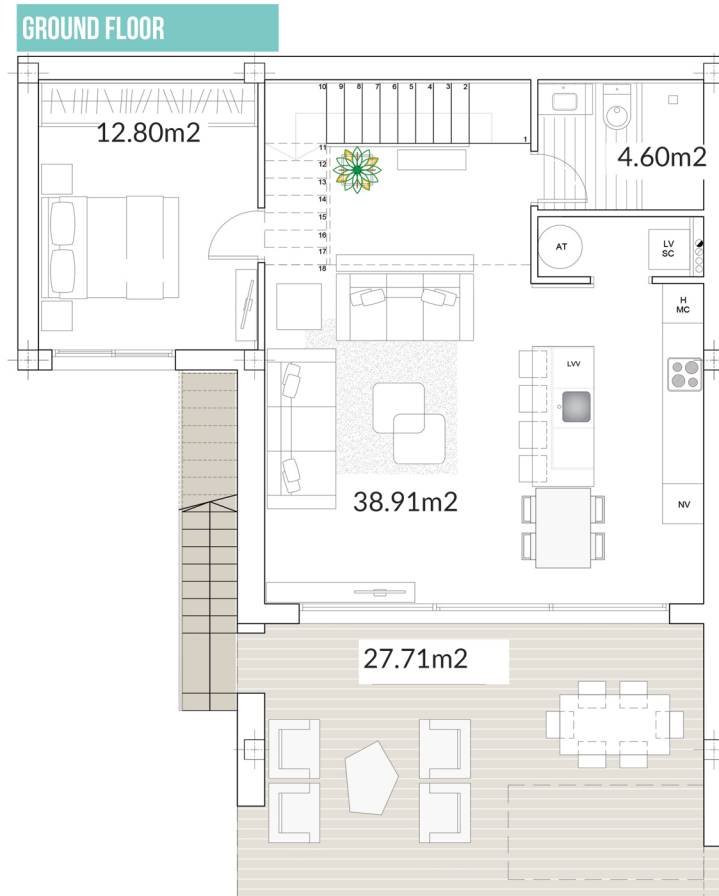
VILLA GREEN - HOUSE TYPE 1

GROUND FLOOR:

COVERED HOUSE	71.34 M2
ACCESS & TERRACE	27.71 M2
TOTAL GROUND FLOOR	99.05 M2

FIRST FLOOR:

COVERED HOUSE	62.50 M2
OPEN TERRACES	24.17 M2
TOTAL FIRST FLOOR	86.67 M2



VILLA GREEN - HOUSE TYPE 2

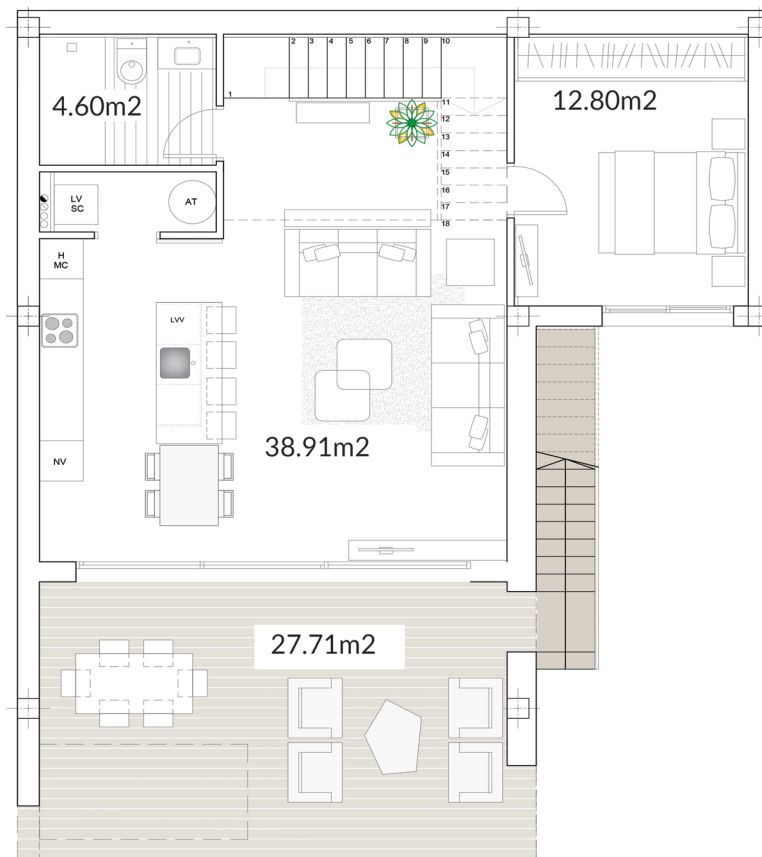
GROUND FLOOR:

COVERED HOUSE	71.34 M2
ACCESS & TERRACE	27.71 M2
TOTAL GROUND FLOOR	99.05 M2

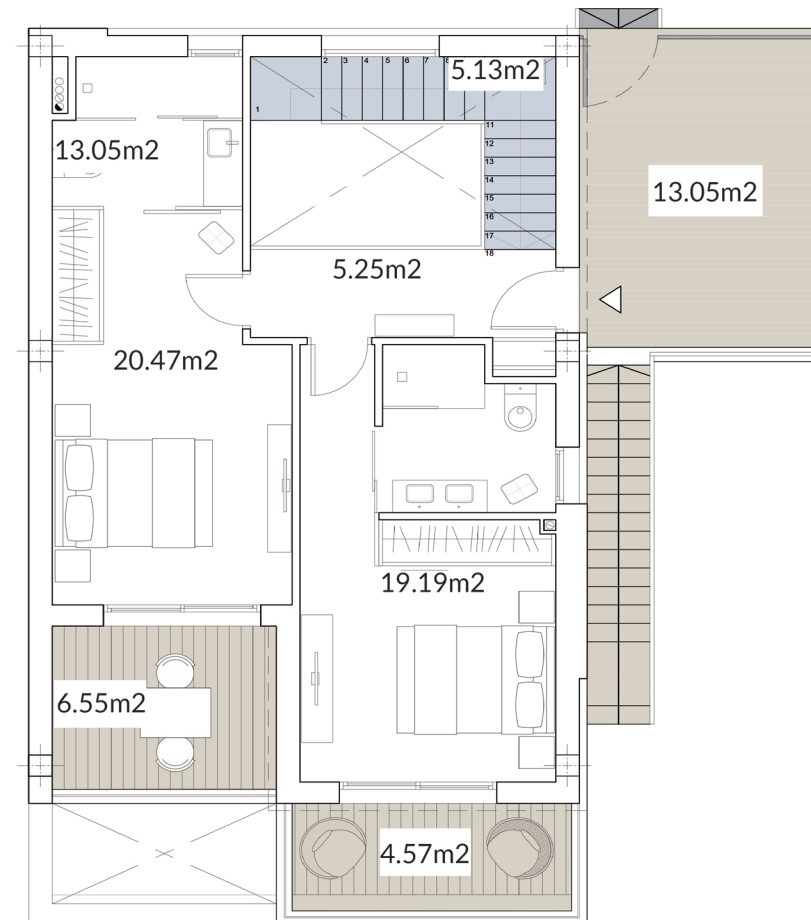
FIRST FLOOR:

COVERED HOUSE	62.50 M2
OPEN TERRACES	24.17 M2
TOTAL FIRST FLOOR	86.67 M2

GROUND FLOOR



FIRST FLOOR










CAMPANA BAY RESIDENTIAL

VILLA BLUE

Large modern villa with beautiful views, located in the Campana Bay Residential. There are two types of this villa - with and without a basement.

There are three spacious bedrooms, one of them suite, two bathrooms and a bright living-dining room with large windows and direct access to the pool and garden.

The design of this model is really unique and breaks all aesthetics of its surroundings.

-  **3 BEDROOM**
-  **2 BATHROOM**
-  **PRIVATE PARKING**
-  **154.95 - 304.13 M2**
-  **PLOT 565 - 364 M2**
-  **SWIMMING POOL**
-  **SOLARIUM**



VILLAS BLUE - GENERAL PLAN



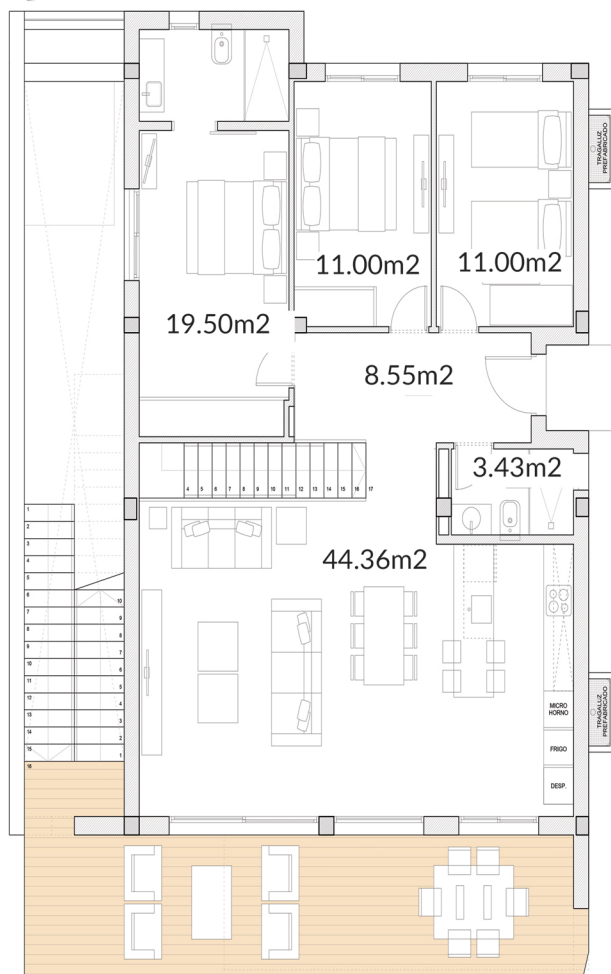
TOTAL BUILT: 154.95/ 304.13 M2

POOL INCLUDED : 30.60 M2

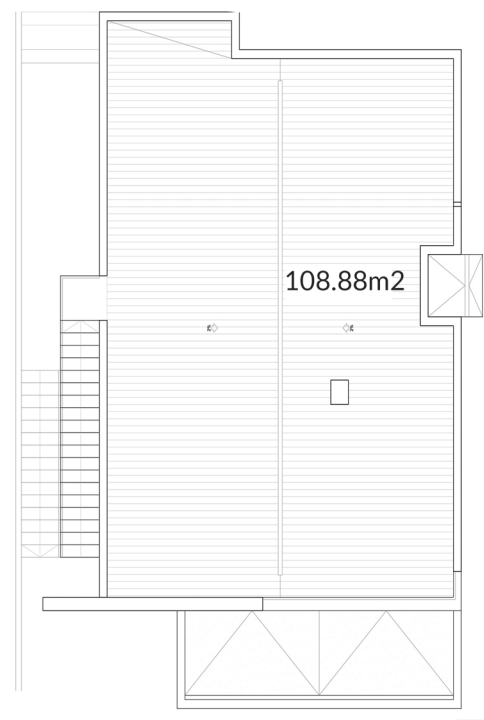
PLOT: 565/364 M2

VILLA BLUE - HOUSE TYPE 1 - WITH BASEMENT

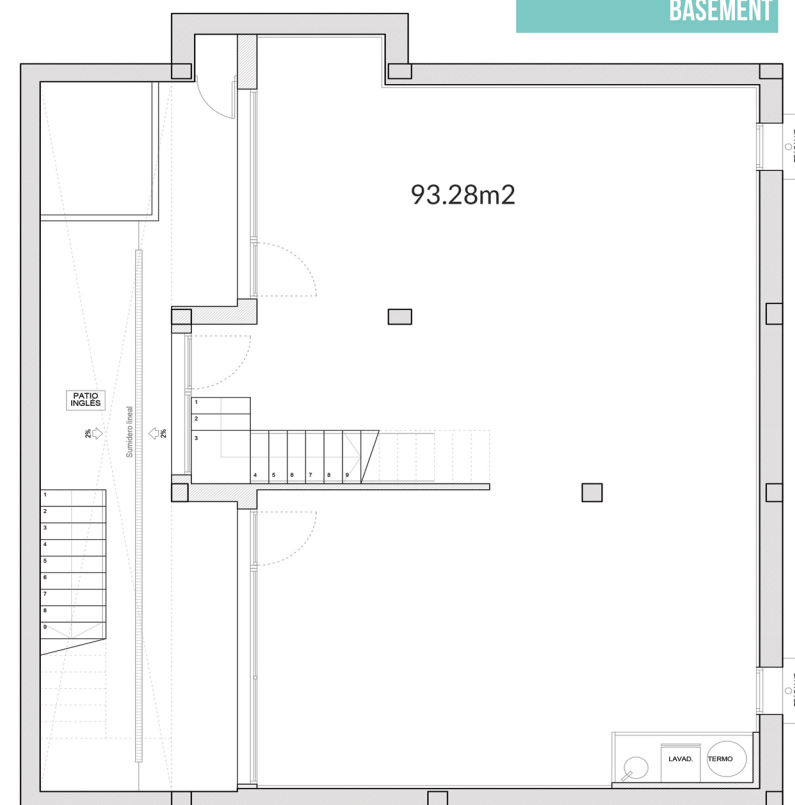
GROUND FLOOR



SOLARIUM

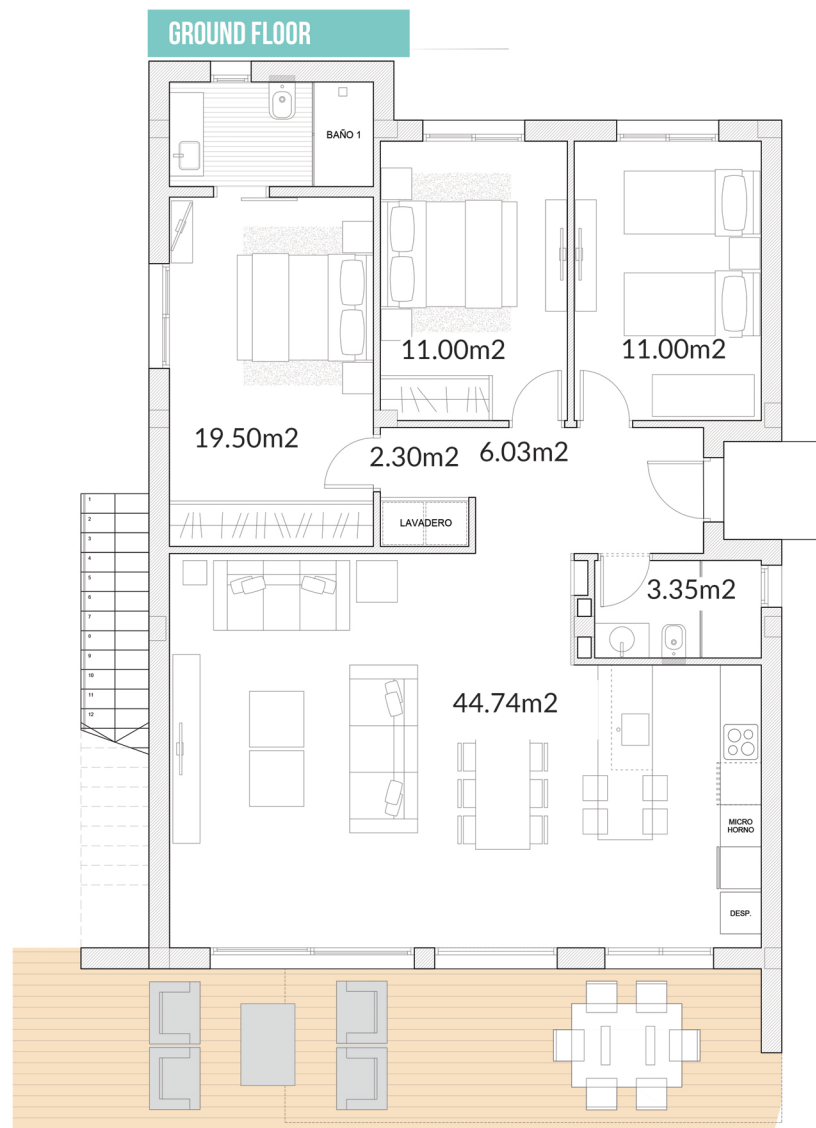


BASEMENT

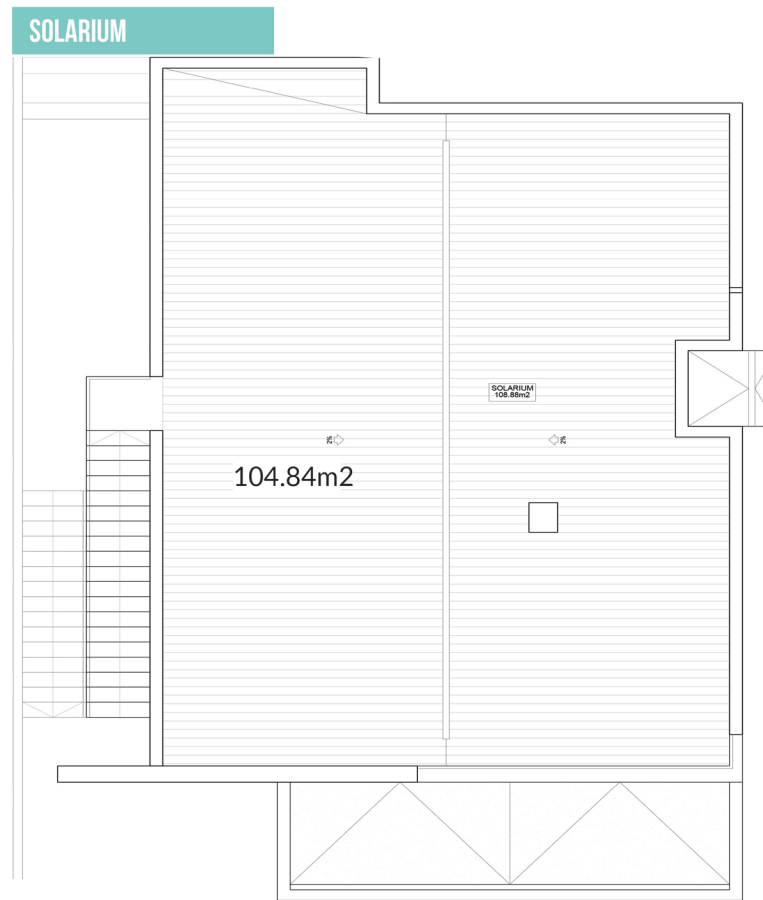


COVERED HOUSE:	114.95 M2
ACCESS & TERRACE:	40.00 M2
TOTAL GROUND FLOOR:	154.95 M2
SOLARIUM:	108.88 M2
TOTAL BASEMENT:	149.18 M2

VILLA BLUE - HOUSE TYPE 2 - WITHOUT BASEMENT



COVERED HOUSE:	114.95 M2
ACCESS & TERRACE:	40.00 M2
TOTAL GROUND FLOOR:	154.95 M2
SOLARIUM:	108.88 M2










COSTALIFE III RESIDENTIAL

VILLA VIEW EXCELLENT

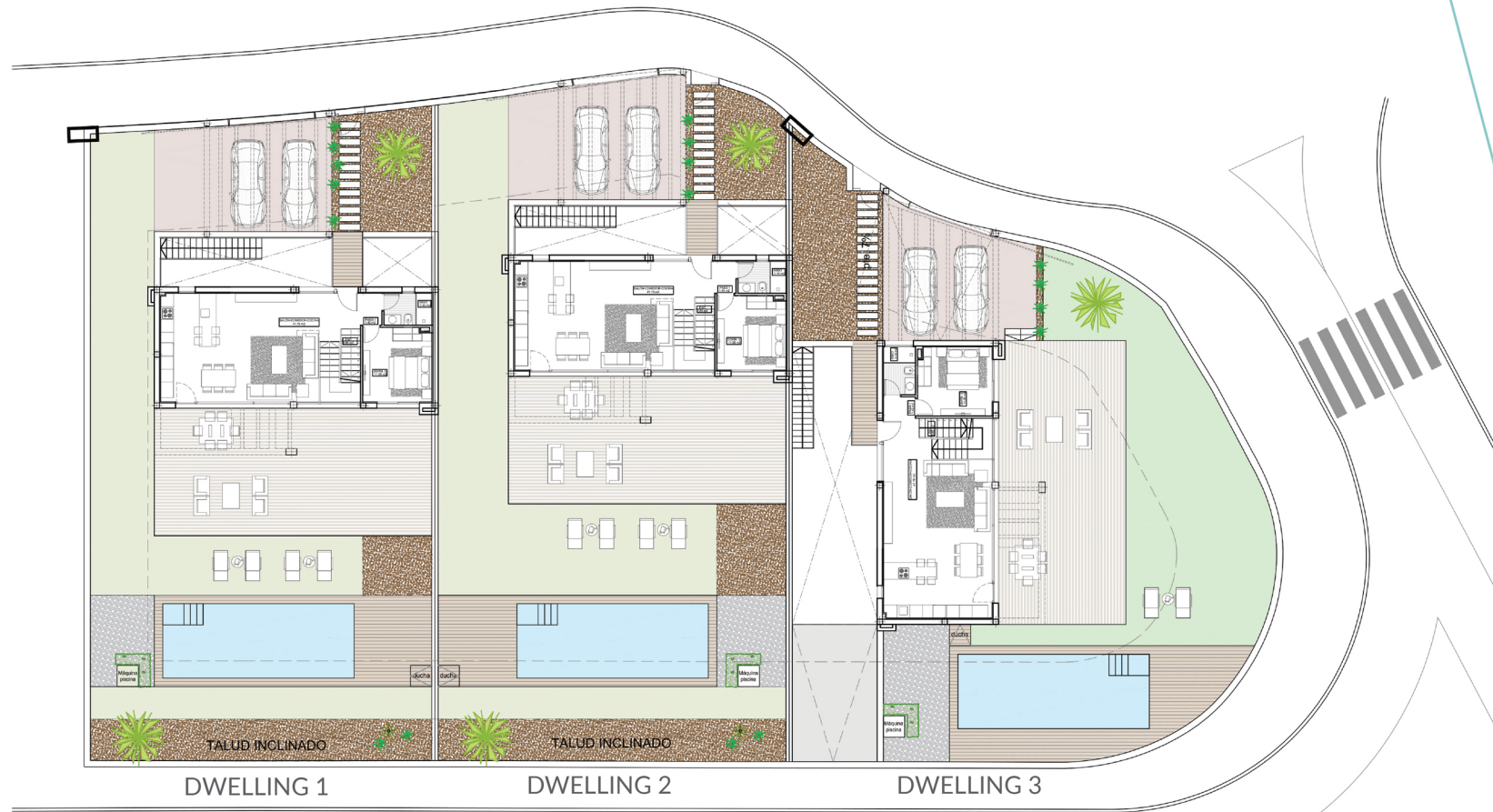
New Residential Complex Costalife III consists of 3 luxury contemporary villas View with plots of 505 - 536 m² and 308.40 - 331.22 m² of construction. This villas offers indoor garden with basement and solarium with two exits.

Beautiful sea views, amazing design and materials of the best quality – guarantee all conditions to enjoy life and rest in one of the most famous for it's climate areas of Costa Blanca.

-  **3 BEDROOM**
-  **3 BATHROOM**
-  **PRIVATE PARKING**
-  **PLOT 505 - 536 M²**
-  **SWIMMING POOL**
-  **INDOOR GARDEN WITH BASEMENT**
-  **SOLARIUM**



VILLA VIEW EXCELLENT - GENERAL PLAN

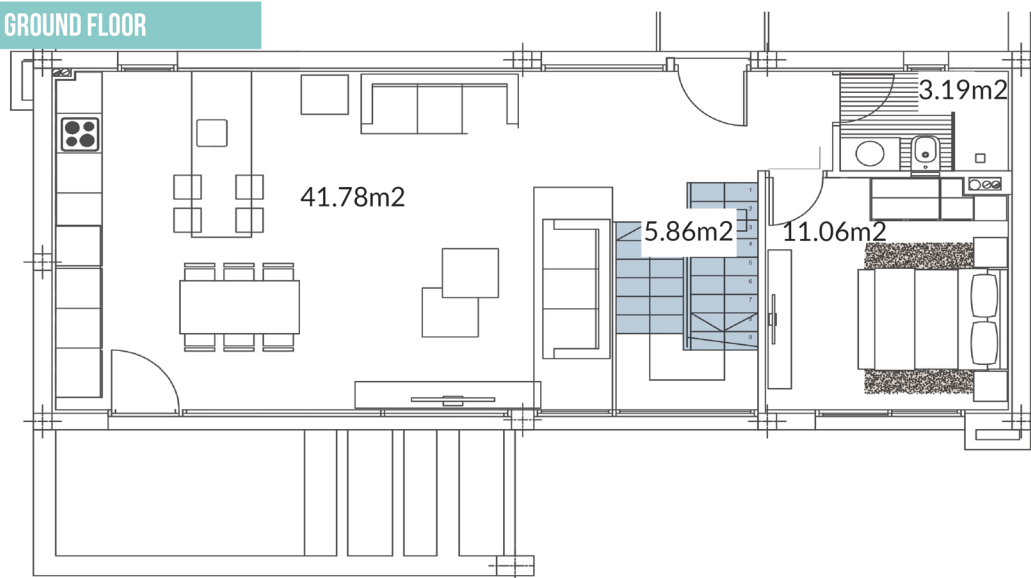


TOTAL BUILT: 308.40 - 331.22 M2

POOL: 31 M2

PLOT: 505 - 531 M2

GROUND FLOOR



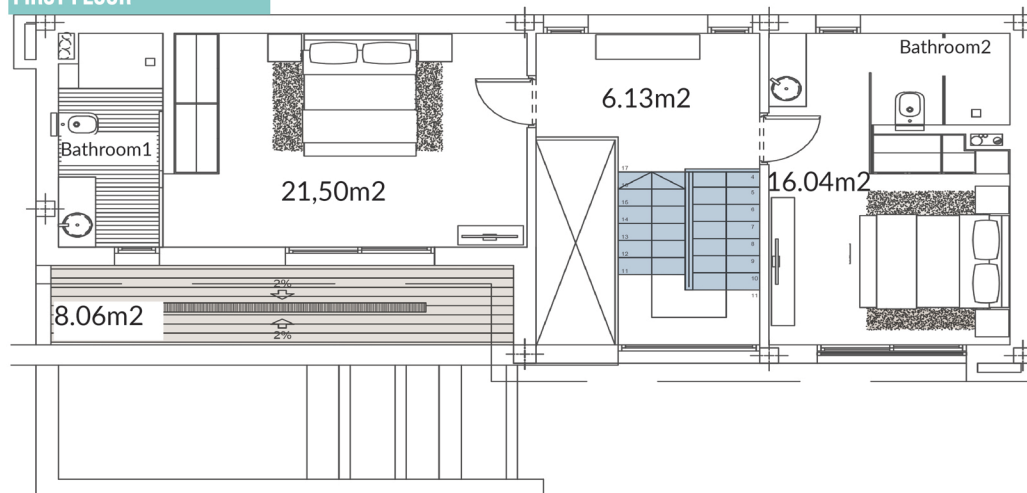
VILLA VIEW EXCELLENT



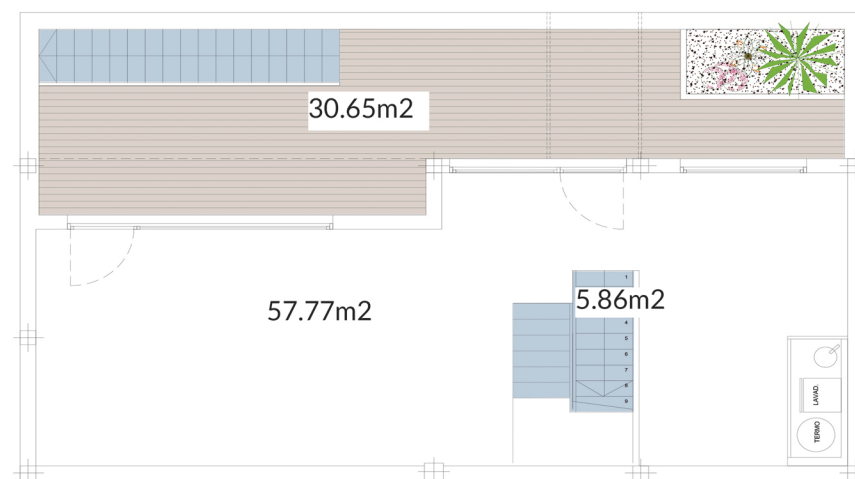
CLOSED SEMI-BASEMENT:	69.64 M2
SEMI ROOFED TERRACE	
INTHE BASEMENT:	30.65- 53.47 M2
CLOSED DWELLING	
GROUND FLOOR:	76.10 M2
COVERED TERRACE	
GROUND FLOOR:	8.00 M2
CLOSED DWELLING	
FIRST FLOOR:	55.73 M2
TERRACE FIRST FLOOR:	8.08 M2
COVERED CASSETTE:	17.37 M2

SOLARIUM:	42.83 M2
SWIMMING POOL:	31.00 M2
TOTAL:	308.40 - 331.22 M2

FIRST FLOOR



BASEMENT VILLAS 1-2

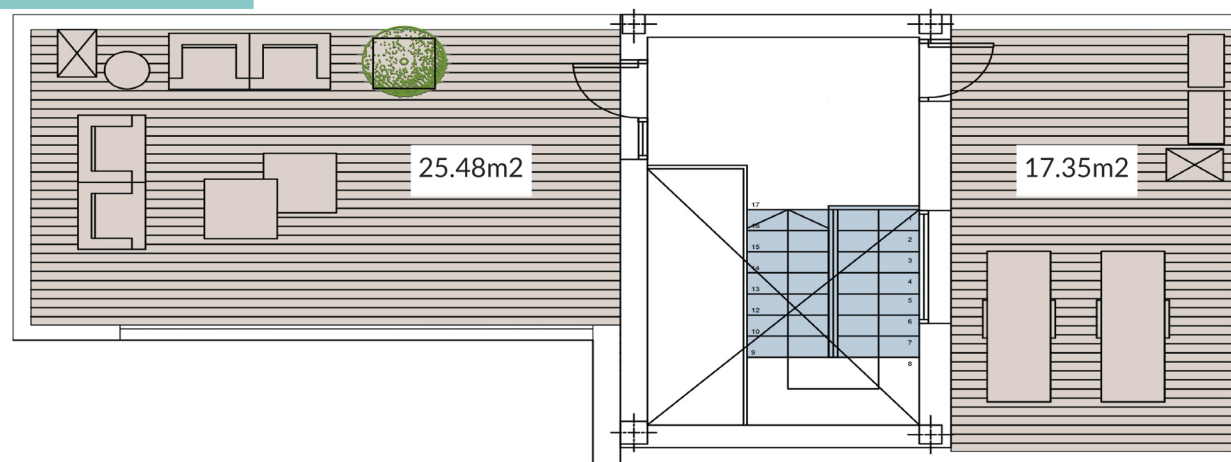


VILLA VIEW EXCELLENT

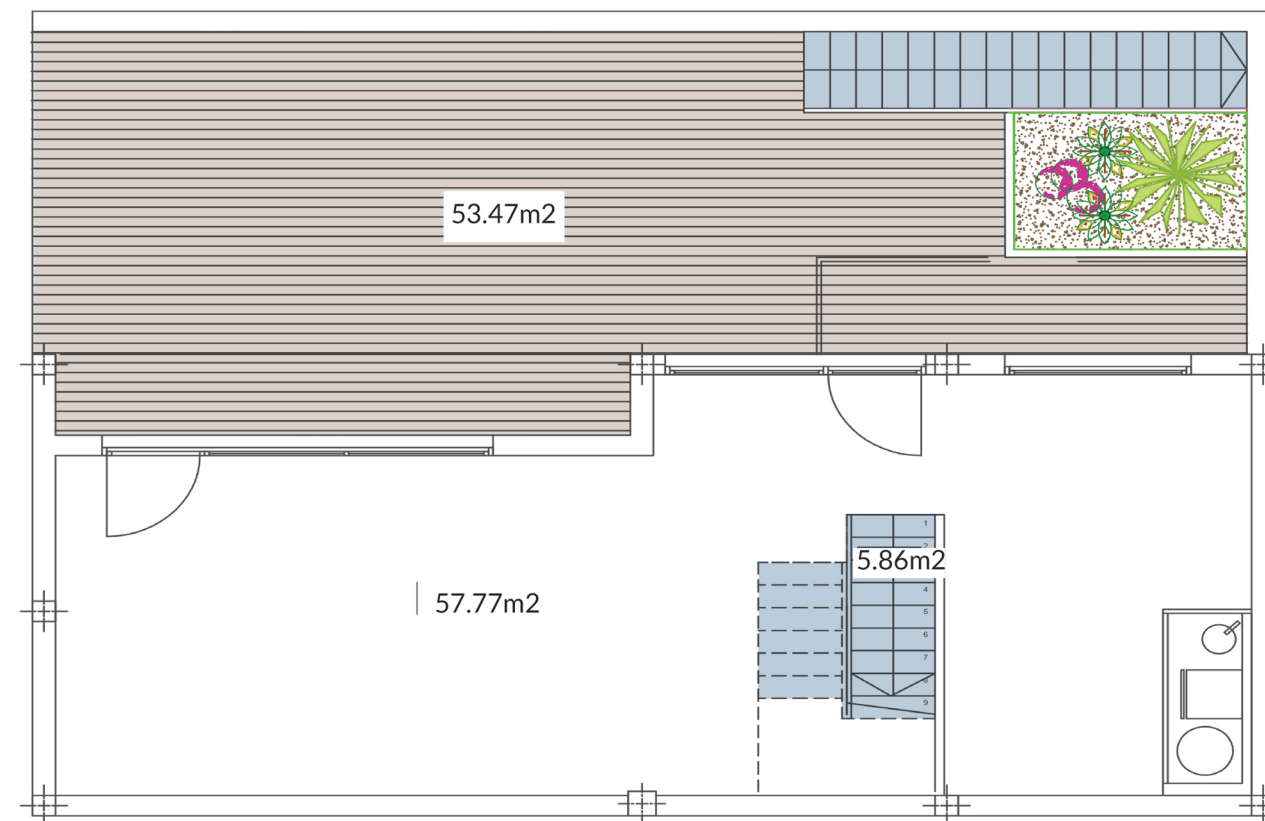
CLOSED SEMI-BASEMENT: 69.64 M2
 SEMI ROOFED TERRACE
 IN THE BASEMENT: 30.65- 53.47 M2
 CLOSED DWELLING
 GROUND FLOOR: 76.10 M2
 COVERED TERRACE
 GROUND FLOOR: 8.00 M2
 CLOSED DWELLING
 FIRST FLOOR: 55.73 M2
 TERRACE FIRST FLOOR: 8.08 M2
 COVERED CASSETTE: 17.37 M2

SOLARIUM: 42.83 M2
 SWIMMING POOL: 31.00 M2
 TOTAL: 308.40 - 331.22 M2

SOLARIUM



BASEMENT VILLA NUM. 3













COSTALIFE II RESIDENTIAL

VILLA ORANGE

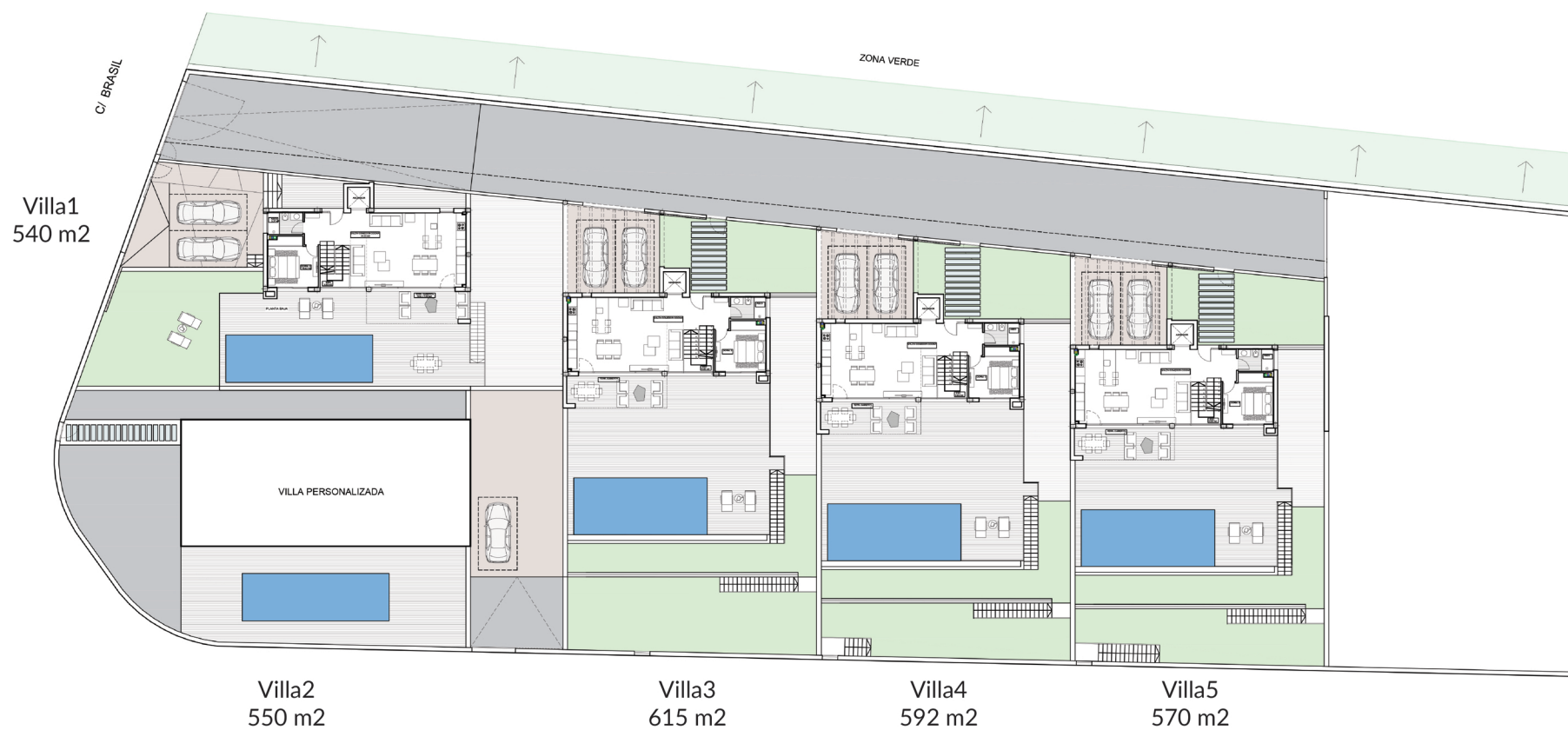
Residential complex includes several luxury villas. Villas Orange consists of two floors, solarium and indoor garden with basement.

Each villa has its own elevator. The solarium offers an unforgettable wide view of Benidorm and the sea. These villas are unique for their design and amenities - a large lounge, big bedrooms en suite on the first floor, solarium for relaxation and enjoyment of sunsets, contemporary swimming pool and large terrace for holidays and rest.

-  3 BEDROOM
-  3 BATHROOM
-  PRIVATE PARKING
-  393.12 M2
-  PLOT 540 - 615M2
-  SWIMMING POOL
-  SOLARIUM
-  ELEVATOR



VILLAS ORANGE- GENERAL PLAN

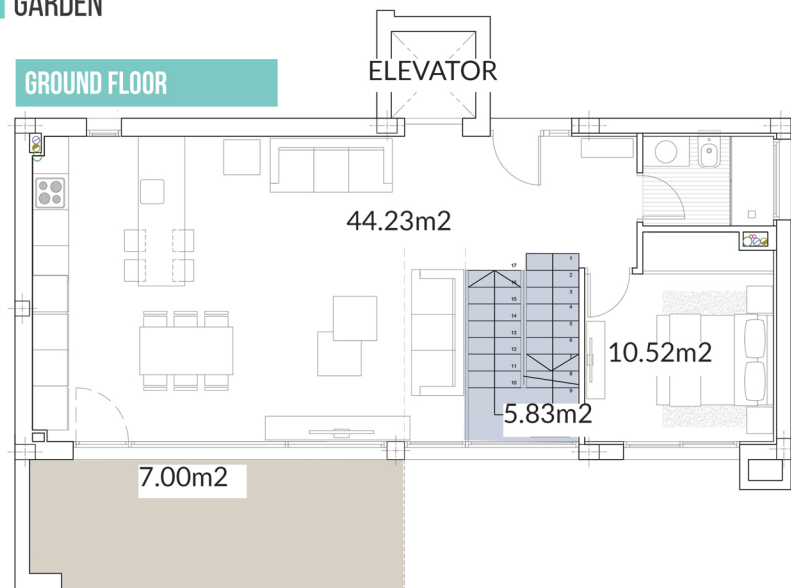


TOTAL BUILT: 393.12 M2

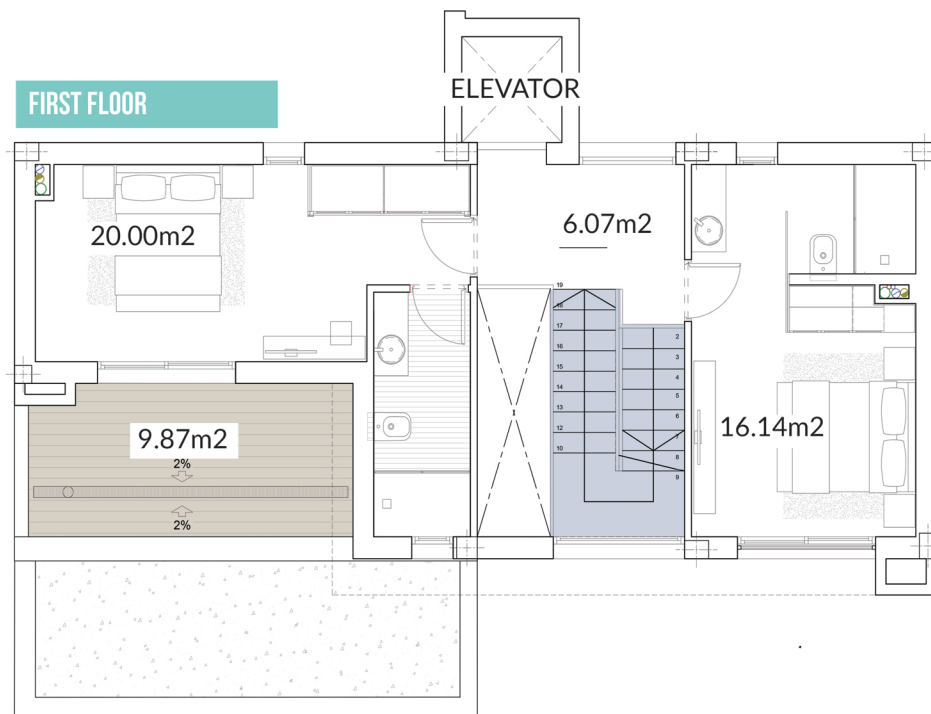
POOL: 33.50 M2

PLOT: 540-615 M2

GROUND FLOOR



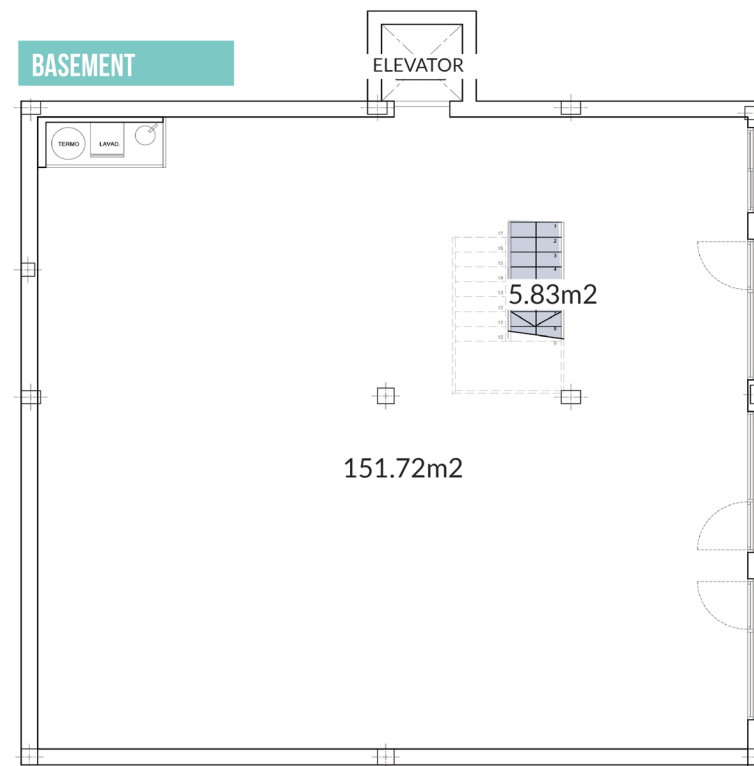
FIRST FLOOR

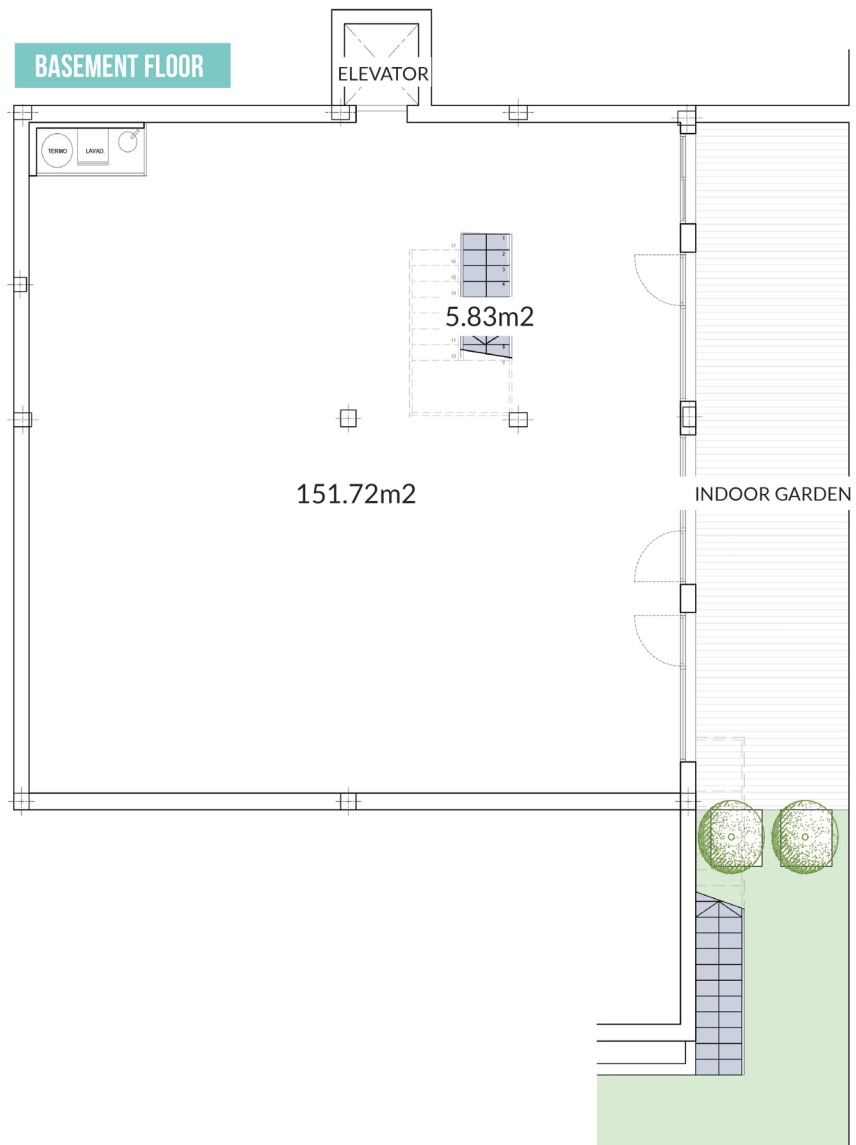


TOTAL GROUND FLOOR: 79.41 M2
TOTAL FIRST FLOOR: 56.39 M2
TERRACE POOL ZONE: 92.60 M2

CLOSED SEMI-BASEMENT: 170.16 M2
SOLARIUM: 41.85 M2
TOTAL BUILT: 393.12 M2

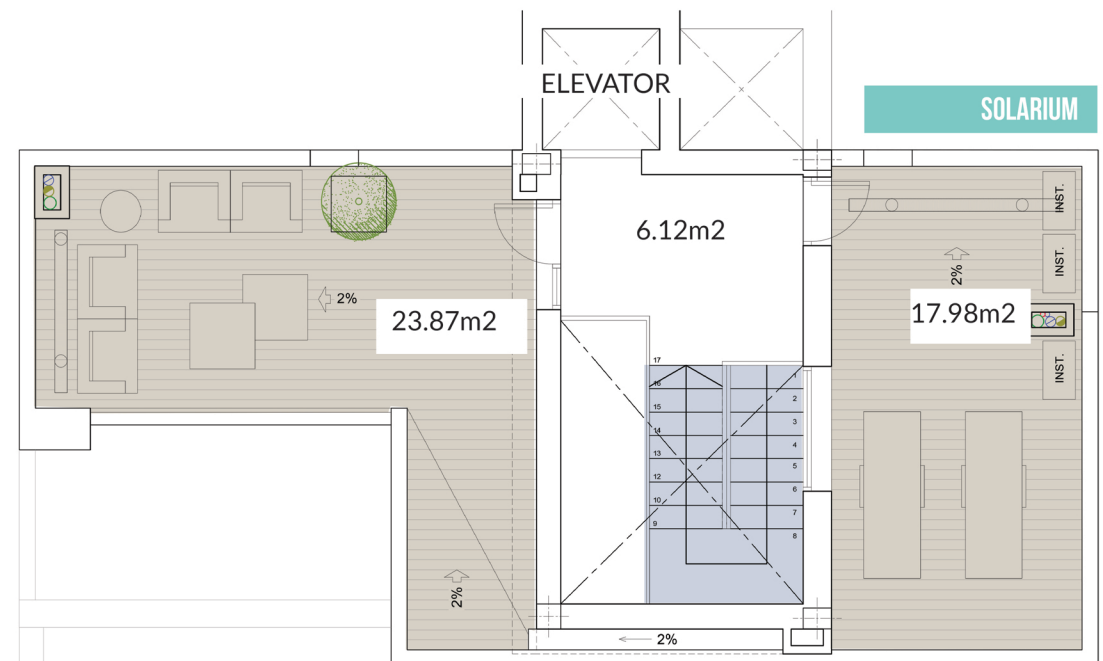
BASEMENT





TOTAL GROUND FLOOR: 79.41 M2
 TOTAL FIRST FLOOR: 56.39 M2
 TERRACE POOL ZONE: 92.60 M2

CLOSED SEMI-BASEMENT: 170.16 M2
 SOLARIUM: 41.85 M2
 TOTAL BUILT: 393.12 M2



ENVIRONMENT

Our properties are located on the borders between Finestrat and Benidorm. Campana Garden stands out as a luxury residential development, where a lot of leisure activities can be enjoyed by the all family members, in an environment just made for relaxing, enjoy and rest.

With a privilege location between the sea and mountains, Campana Garden is close to many facilities like professional golf courses, large and beautiful beaches, leisure areas (theme parks, water parks, culture, camping, ..), hiking and nature areas and much more.

If you are looking for your home close to the sea, mountains and to all services, with beautiful green areas where you will enjoy the sun, with amazing panoramic views of Benidorm then your home is in one of the Campana Garden complexes.





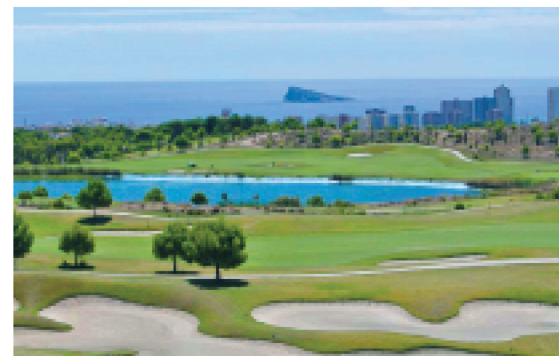
BEACHES

Beaches like “Poniente” and “Levante” are two strips of golden sand, more than 6 km long, ideal for water sports and tan. Enjoy one of the most visited beaches in the Europe and the best in CostaBlanca.



LEISURE

Mundomar, Aqualandia and Terra Mitica are among the many theme parks in the area, where you can enjoy with your friends, family, couple and the most adventurous.



GOLF

Numerous professional golf courses very close to Campana Garden. Some of them are Sierra Cortina Pich & Pat, Villaitana Golf, Las Rejas Pich & Pat, ... Enjoy one of the most rewarding sports in the area.



HIKING AND NATURE

Puig Campana (Finestrat) - second highest mountain of Alicante with amazing views from the top. And Sierra Helada (Benidorm) is a large mountain formed mostly by limestone and at night, when the moon reflects on it, it looks like ice.



ADRESS:

Carrer de Puerto Rico 12,
SHOW HOUSE Campana Garden
03509 Finestrat - Alicante

GET IN TOUCH:

www.campanagarden.com
info@campanagarden.com

GET CONNECTED:

[f](#) @campanagarden
[i](#) @campanagarden